



5th June 2026

## Newsletter No 32

### Message from Mr Bullivant

As we complete our first week back after the half-term break, I would like to thank all of our children, staff and families for making such a positive start to the new term. It has been wonderful to see the children returning with an enthusiasm and eagerness to learn.

Year 4 have made an excellent start to the week as they began their Multiplication Tables Check. We are incredibly proud of the effort and determination they have shown throughout the assessment. Their success is a testament to the hard work, practice and commitment they have demonstrated all year. Well done, Year 4 – you should all be very proud of yourselves!

This week, we have also welcomed visitors from Essex Fire and Rescue Service, who delivered a series of important water safety workshops across the school. The sessions provided valuable safety messages as we approach the summer months, and the children engaged brilliantly throughout. The visitors commented on how well our pupils contributed to discussions and represented the school. They were a real credit to us all.

Year 6 have also been busy taking part in an important online safety workshop this week. The children explored key messages about staying safe online, making sensible choices and understanding how to navigate the digital world responsibly. These are vital lessons, and the children approached the workshop with maturity and thoughtfulness.

Across the school, excitement has been building as pupils have been busy practising for Sports Day. It has been fantastic to see the enthusiasm, teamwork and determination on display as children prepare to showcase their sporting skills. Due to the weather forecast, we have made the decision to rearrange Sports Day to **Thursday**. Thank you for your flexibility and understanding, and we look forward to welcoming you for what promises to be a fantastic event.

Some members of our School Council enjoyed a very exciting trip this week to collect our **Beat the Street Award**. The children represented the school brilliantly and were delighted to receive this recognition. As part of the reward, they also enjoyed spending £70 at the bookshop, selecting a range of exciting new books for the school. Well done Cherry Tree!

We look forward to another busy and successful week ahead and to celebrating Sports Day together.

**Warm regards,**

**Mr Bullivant**

## SPORTS DAY UPDATE

After checking the weather forecast for next week, we have made the decision to cancel Sports Day on Monday.

It will now be held on the reserve day which is Thursday 11th June 2026.

EYFS, Year 1 & 2 will be held between 9am-10.45am

Year 3, 4, 5 & 6 will be held between 1.15pm -3pm

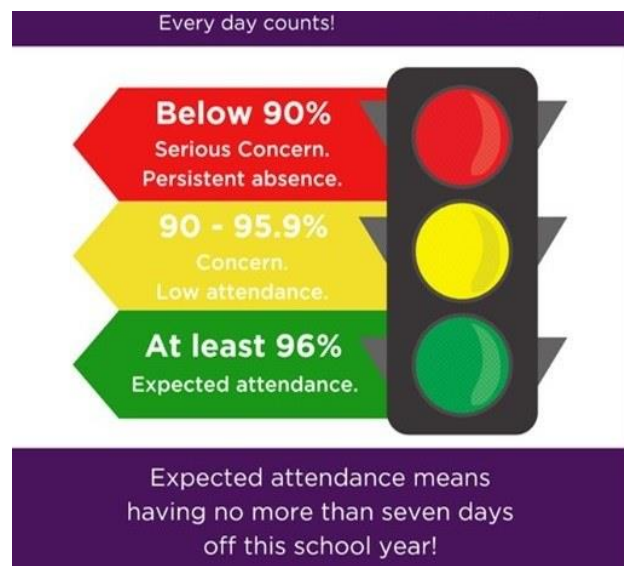
## Attendance Matters

Good attendance is essential for children to make the most of their learning and to fully take part in all the experiences school has to offer. Every day in school really does count, and even small amounts of absence can quickly add up to lost learning time.

To help raise the profile of good attendance across the school, we have recently launched an exciting new initiative called **Attendopoly**. Each week, the three classes with the best attendance — particularly those achieving or exceeding our school target of **96%** — earn the opportunity to roll the dice during our **Celebration Assembly**.

Where they land on the board could lead to a range of exciting prizes for the class, making attendance something we can all celebrate together. - last week Year 4 enjoyed hot chocolate with Miss Symonds!

We look forward to seeing which classes make it onto the Attendopoly board next week. Thank you, as always, for your support in ensuring children arrive at school every day, on time, ready to learn.



### Attendance results – week ending 5<sup>TH</sup> June 2026

EYFS	98.81 %
Year 1	98.91 %
Year 2	94.05 %
Year 3	99.00 %
Year 4	100.00 %
Year 5	94.89 %
Year 6	98.61 %
Whole School	97.84 %
YTD (from 01.09.2025)	94.96 %

## Summer Term 2026 Dates

### Dates for the Summer Term

Monday 1st June -12th June - Year 4 Multiplication checks

Tuesday 9th June 2026 - Year 6 Crucial Crew

Thursday 11th June 2026 - Sports day – KS1 9-10.45am – KS2 1.15-3pm

Friday 12th June 2026 - Group Photos

Monday 15th June 2026 - SEND coffee morning Yr5/6 transition

w/c Monday 8th June 2026 - Phonics Screening check for Year 1 (and some YR2 pupils)

Thursday 18th June 2026 - Year 6 1st transition day at Thurstable

Thursday 25th & Friday 26th June - Year 6 Transition days at TLA

Thursday 25th June 2026 - Year 6 transition day at St Helena School

Thursday 25th June 2026 - Year 6 2nd transition day at Thurstable

Thursday 25th June 2026 - Year 6 transitions day at Paxman Academy

Thursday 25th June 2026 - EYFS Meet the Teacher 9.30-11.30am – transition / move up day

Monday 29th June – Friday 3rd July 2026 - One Plan Meetings

Tuesday 30th June 2026 - EYFS Stay & Play 4-5pm

w/c Monday July 6th 2026 - Reports out during this week

Tuesday 7th July 2026 - SATs results released. These will be checked and shared with pupils and parents/carers as soon as possible.

Tuesday 7th July 2026 - Year 6 performance to parents

Wednesday 8th July 2026 - EYFS Stay & Play 2-3pm

Thursday 9th July 2026 - iROCK concert followed by Cherry Tree Summer Concert and Picnic

Thursday 9th July 2026 - School Disco EYFS & KS1 4-5pm KS2 5.15-6.45pm

Friday 3rd July 2026 - After School Clubs finish

Monday 13th July 2026 - Open Classrooms – parents invited

Tuesday 14th July 2026 - Gardening Competition

Thursday 16th July 2026 - Year 6 Leavers' Assembly

Friday 17th July 2026 - Last day of term.

Monday 20th July 2026 - Inset day

## Achievements Outside of School

We are keen to celebrate the children's achievements outside of school and would love to hear from you if your child has taken part in something special they enjoy. Please send a brief description and a photo if you wish, of your child's achievement to be included in the newsletter.

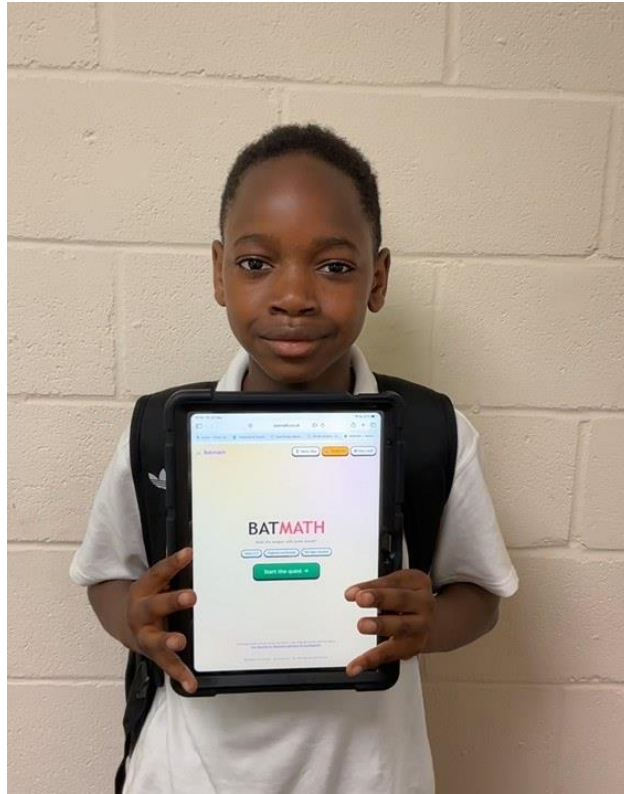
## Celebrating Innovation and Creativity

Ayomipo has been putting his coding and computing skills to the test by designing and creating his very own maths website BATMATH.

Created for children from Year 1 to Year 6, BATMATH is packed with fun and engaging maths activities to help children learn and practise their skills.

Even more impressively the website is completely free for everyone to use!

Why not give it a try and explore the world of BATMATH today!



## Special Award for Writing



Year	Awarded to
EYFS	Henry
Year 1	Husna
Year 2	Oliver
Year 3	Josh
Year 4	Samantha
Year 5	Adrian
Year 6	Ruby-Sue

## Times Tables Rock Stars & Numbots Challenge



We are trying to increase engagement of the pupils with the excellent Numbots and TTRS programmes.

We will be handing out a certificate for the child, in each class, who has engaged the most with their class TTRS/Numbots on a weekly basis.

Please encourage your child to play at home.

Year group	Most engagement this week
EYFS	Aelpheah
1	Cameron
2	Lucas
3	Jacob
4	Arons
5	None recorded
6	Trei

## Useful Info



Are you worried about your child travelling to secondary school on their own in September?

Is your child anxious about travelling to school by bus for the first time on their own?

Being able to travel independently is a key life skill.

Travel Training gives people with SEN or additional needs the confidence and skills to travel on buses and trains independently. We can also help with walking routes.

Anyone can refer using our online referral form, we aim to be in touch within 10 days

[www.travel-training.co.uk](http://www.travel-training.co.uk)

[Travel.training@essex.gov.uk](mailto:Travel.training@essex.gov.uk)

03330322872

Please take a look at our travel training video by clicking here: [Travel Training, The journey to independence - Essex County Council](#)



**Are you a parent of a Year 5 child who has Special Educational Needs?**

Worried about transition to secondary school?

Ask questions? SEN support or EHCP

What might provision look like for your child in Year 7?

**Come and meet with Jane Hearn, Nicola Chisnall and Emily Henty from SEND services.**

**9<sup>th</sup> June** 9.30am to 11am  
Old Heath Primary School  
Old Heath Road, Colchester CO2 8DD

**16<sup>th</sup> June** 1.00pm to 2.30pm  
St Michael's Primary School  
Camulodunum Way, Colchester CO2 9RA

**24<sup>th</sup> June** 1.30pm to 3.00pm  
Monkwick Junior School  
School Road, Colchester CO2 8NN

All dates are open to parents of pupils in Year 5 on the SEN register at any school listed


Fingringhoe Primary school  
Mersea Primary School  
Langenhoe Primary School  
Cherry Tree Academy  
Old Heath Primary School  
Monkwick Junior school

St Lawrence Primary School  
Montgomery Primary School  
St Michael's Primary School  
Gosbecks Primary School  
Kings Ford Academy

Please only attend ONE session.


FREE  
MOVING UP  
WEBINARS  
FOR PARENTS/CARERS  
of primary aged children  
Provided by your Mental Health Support Team  
@EssexMHST\_and\_SETeamhs

bit.ly/3MaR1wJ




Moving Up from  
Infants to Juniors  
17<sup>th</sup> June 10 am and 7 pm

Moving Up from  
Primary to Secondary  
24<sup>th</sup> June 10 am and 7 pm



Striving to provide the best care by the best people



## Autism Anglia

We'd like to highlight Autism Anglia's Community Connect — a *free* support service specifically for children with neurodiverse needs and their families.

**! No diagnosis needed !** Support available even if your child is just *on a pathway* or you're exploring possible neurodiversity

They can help with: 🌟 Autism-related questions or concerns 🌟 Communication and social interaction 🌟 Emotional regulation 🌟 Sensory needs 🌟 Anxiety or behaviour linked to neurodiversity

Find out more here: 📍 <https://www.autism-anglia.org.uk/our-services/community-connect/>

If you're unsure if this service is for you and you'd like some advice, don't hesitate to ask.

Mrs Donnelly

## Cherry Tree Foodbank

At Cherry Tree, we understand that life can sometimes bring unexpected challenges, and there may be times when a little extra support with food is needed. That's why we're launching the **Cherry Tree Foodbank** — a resource available to all our families whenever it's needed.

To help us keep the foodbank stocked, we welcome donations of **long-life food items**, including:

- Cereals
- Long life milk
- Tinned potatoes
- Pasta and rice
- Sauces
- Tinned vegetables
- Baked beans
- Tinned pies
- Tuna and other canned goods

Every contribution, big or small, makes a real difference.

If you'd like support, please don't hesitate to get in touch. You can call, email, or drop by to speak with me directly. I'll be happy to put together a food hamper for you, and I can also provide food bank vouchers if needed.

Together, we can support one another and make sure no family goes without.

Warm regards,

Miss Symonds

## Communication with school.

When trying to communicate with members of staff at Cherry Tree, please bear in mind that they are working extremely hard with the children.

We aim to acknowledge all parent communication within 48 hours - this includes phone calls and emails.