

# NEWSLETTER



**CherryTree**  
ACADEMY

## MESSAGE FROM MISS NEWLEY

Dear All,

What a special week we have had this week at Cherry Tree with all the performances. EYFS and Yr 1 did an amazing Nativity performance, Yr 2 & 3 performed special Christmas songs and Yr 4, 5 & 6 did a Christingle service. All the children did so well, we were so proud of them. Thank you for the amazing support from parents and carers too.

The math's challenge has been completed and the money totted up and we are pleased to announce the results:

1st - Yr 2 £213.40

2 - Yr 6 - £186.17

3rd - Yr5 - £97.59

4th - Yr1 - £77.67

5th - EYFS - £76.50

6th - Yr 4 - £54.10

7th - Yr 3 - £17.03

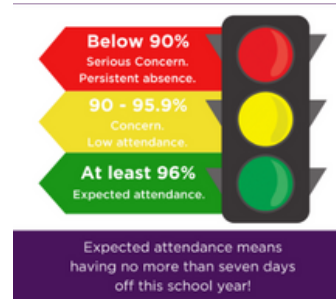
Very well done to Year 2 they did so well!

Don't forget Tuesday is Christmas jumper day and also our special Christmas lunch. The Christmas fayre is on Wednesday at 2pm. We have lots of exciting stalls and games so everyone can get involved. On Friday 20th December it will be a non-uniform day and the children are able to bring in board games etc (no electronics please). In the afternoon we will be having parties and snacks ( we are unable to accept any donations of food thanks)

Next week the newsletter will have our termly round up to share with you.

Enjoy the weekend everybody.  
Miss Newley

## ATTENDANCE MATTERS



EYFS	96.0%
YEAR 1	95.0%
YEAR 2	93.3%
YEAR 3	99.5%
YEAR 4	90.9%
YEAR 5	88.5%
YEAR 6	95.0%
<b>TOTAL SCHOOL</b>	<b>94.03%</b>

# READING AT CHERRY TREE



AT CHERRY TREE ACADEMY WE ARE PASSIONATE ABOUT ENSURING THAT EVERY CHILD IS A READER. ONE OF THE WAYS WE DO THIS IS TO USE A COMPUTER PROGRAM CALLED ACCELERATED READER (AR). AR HELPS TEACHERS MANAGE AND MONITOR CHILDREN'S INDEPENDENT READING PRACTISE. YOUR CHILD PICKS A BOOK AT HIS/HER OWN LEVEL AND READS IT AT HIS/HER OWN PACE. WHEN FINISHED, YOUR CHILD TAKES A SHORT QUIZ ON THE COMPUTER - PASSING THE QUIZ IS AN INDICATION THAT YOUR CHILD HAS UNDERSTOOD WHAT HAS BEEN READ.

## Weekly word count ...

WB 12.12.24		
Year	Most words read - individual	Total words read – whole class
Year 1	Tyler and Sophia	
Year 2	Anifowose- 15, 091 Anifowose, Charlie, Demi, Marcus, Rileigh	<b>25,248</b>
Year 3	Thomas – 4,269	<b>11,238</b>
Year 4	Antonio -24,083	<b>110,306</b>
Year 5	Persi – 132,961	<b>440,803</b>
Year 6	William – 95,852	<b>227,509</b>

## RESULTS

The highest number of minutes played:

Daisy Year 4  
Charley Year 4  
Teddy Year 4

The highest accuracy this week

Stanley Year 6  
Isaac Year 3  
Ruby-Sue Year 5

The most improved speed this week

Lenny Year 2  
Jessica Year 4  
Charley Year 4



**LEARNING YOUR TIMES TABLES IS SO IMPORTANT AND WE LIKE TO MAKE IT FUN FOR THE CHILDREN. WE USE TIMES TABLES ROCK STARS WHICH AN AWARD-WINNING MATHS PLATFORM WHERE CHILDREN CAN PRACTISE THEIR TIMES TABLES LIKE A ROCK STAR!**

### KS1 NUMBOTS CHALLENGE



**AWARDED TO THE CHILDREN THAT PLAY FOR THE MOST TIME.**

**1ST ANIFOWOSE  
2ND RITAL  
3RD IOLANTHE**



# Christmas FAYRE

Wednesday 18th December at 2pm  
Come and join us for an afternoon of  
fun (with a special guest!)

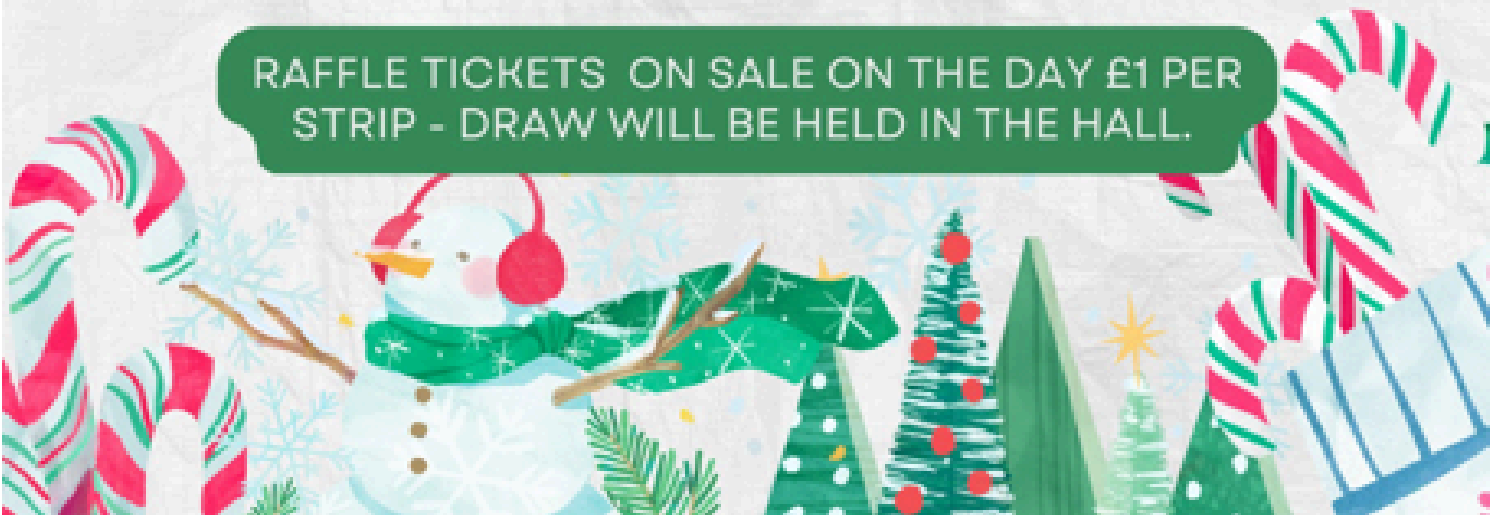
Free Entry

## LOTS OF STALLS INCLUDING:

- PING PONG IN A JAR
- TOMBOLA
- RAFFLE
- SECOND HAND BOOKS, TOYS AND UNIFORM
- DECORATE A BISCUIT
- PENALTY SHOOT OUT
- REINDEER RING TOSS

CAFE  
TEA COFFEE AND CAKES  
HOT CHOCOLATE BAR

RAFFLE TICKETS ON SALE ON THE DAY £1 PER  
STRIP - DRAW WILL BE HELD IN THE HALL.



**CHRISTMAS IS COMING!**

**THANK YOU SO MUCH FOR ALL YOUR KIND DONATIONS - YOU HAVE BEEN VERY GENEROUS.**

**WE ARE STILL LOOKING FOR RAFFLE AND TOMBOLA PRIZES IF YOU HAVE ANYTHING THAT WOULD BE SUITABLE. PLEASE BRING TO THE OFFICE**



**PRESENTS UNDER THE TREE AT CHRISTMAS**

**WE WILL BE DOING PRESENTS UNDER THE TREE FROM THURSDAY 12TH DECEMBER 2024 - THIS WILL CONTINUE UNTIL THURSDAY 19TH DECEMBER 2024.**

**THERE ARE SOME REALLY LOVELY GIFTS AND THEY WILL BE PRICED BETWEEN 50P - £1.50**

**THE CHILDREN WILL BE ABLE TO CHOOSE ONE PRESENT FROM UNDER THE TREE TO GIVE TO A FAMILY MEMBER OR FRIEND. THEY WILL BE ABLE TO WRAP THE PRESENT IN SCHOOL AND BRING THEM HOME AS A SURPRISE FOR THE BIG DAY.**

**PLEASE CAN THE CHILDREN BRING THEIR MONEY INTO CLASS AND THEIR TEACHER WILL ARRANGE FOR THEM TO BUY A PRESENT. THANK YOU ONCE AGAIN FOR ALL YOUR SUPPORT WITH THIS**

## **EYFS 2025**

**IF YOU, OR ANYONE YOU KNOW, HAS A CHILD THAT IS DUE TO START SCHOOL NEXT SEPTEMBER 2025 PLEASE READ THE BELOW.**

**IF YOUR CHILD WAS BORN BETWEEN 1 SEPTEMBER 2020 AND 31 AUGUST 2021, YOU CAN NOW APPLY FOR PRIMARY (RECEPTION) SCHOOL PLACES. THE APPLICATION WINDOW IS OPEN BETWEEN 4 NOVEMBER 2024 AND 15 JANUARY 2025.**

**THOSE RECEIVED AFTER THE 15 JANUARY DEADLINE WILL BE CONSIDERED ONCE ALL ON TIME APPLICATIONS ARE DETERMINED. THIS MEANS APPLYING LATE COULD REDUCE THE CHANCE OF GETTING A PLACE AT YOUR PREFERRED SCHOOL.**