

NEWSLETTER



CherryTree
ACADEMY

MESSAGE FROM MISS NEWLEY

Dear Parents and Carers,

We have had another busy week at Cherry Tree this week with lots of discussion about the £10 Maths Challenge. The exciting list of activities is below and we are really looking forward to seeing how the classes get on!

Year 4 did a fantastic assembly this week - it was lovely to see it so well supported by parents/ carers. The assembly had an anti-bullying theme and included scenarios, posters and songs.

Thank you to all that have already donated to the Christmas activities - presents under the tree, raffle and tombola etc. We really appreciate your generosity.

Have a lovely weekend everyone 😊

Miss Newley

Now the colder weather is upon us please make sure your child/children have appropriate coats (hats & gloves too if necessary). Please make sure these are all named.

Children also need to have the following every day:

Correct PE kits

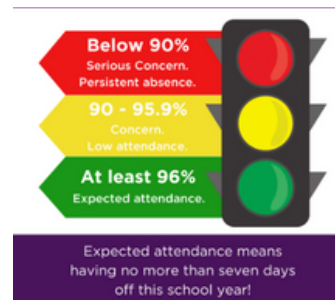
water bottles

reading diaries

correct school uniform

All of these items must be named.

ATTENDANCE MATTERS



EYFS	78.8%
YEAR 1	97.3%
YEAR 2	97.3%
YEAR 3	93.2%
YEAR 4	92.6%
YEAR 5	90.1%
YEAR 6	92.1%
TOTAL SCHOOL	91.63%

READING AT CHERRY TREE



AT CHERRY TREE ACADEMY WE ARE PASSIONATE ABOUT ENSURING THAT EVERY CHILD IS A READER. ONE OF THE WAYS WE DO THIS IS TO USE A COMPUTER PROGRAM CALLED ACCELERATED READER (AR). AR HELPS TEACHERS MANAGE AND MONITOR CHILDREN'S INDEPENDENT READING PRACTISE. YOUR CHILD PICKS A BOOK AT HIS/HER OWN LEVEL AND READS IT AT HIS/HER OWN PACE. WHEN FINISHED, YOUR CHILD TAKES A SHORT QUIZ ON THE COMPUTER - PASSING THE QUIZ IS AN INDICATION THAT YOUR CHILD HAS UNDERSTOOD WHAT HAS BEEN READ.

Weekly word count ...

WB 21.11.24		
Year	Most words read - individual	Total words read – whole class
Year 1	Ella-Rose and Sophia	
Year 2	Anifowose – 8,777 Demi, Charlotte and Ronnie	14,730
Year 3	Hope - 3,968	15,211
Year 4	Nicholas - 6,679	24,082
Year 5	Ayomipo – 145,541	359,725
Year 6	William – 22,852	44,330

RESULTS

The highest number of minutes played:

Tymofii Year 2

Daisy Year 4

Charley Year 4

The highest accuracy this week

Rital Year 2

Robert Year 4

Danny Year 1

The most improved speed this week

Apple Year 4

Mia Year 4

Tymofii Year 2



LEARNING YOUR TIMES TABLES IS SO IMPORTANT AND WE LIKE TO MAKE IT FUN FOR THE CHILDREN. WE USE TIMES TABLES ROCK STARS WHICH AN AWARD-WINNING MATHS PLATFORM WHERE CHILDREN CAN PRACTISE THEIR TIMES TABLES LIKE A ROCK STAR!

KS1 NUMBOTS CHALLENGE



AWARDED TO THE CHILDREN THAT PLAY FOR THE MOST TIME.

Thank you to everyone that has donated items to the Colchester Food Bank.

We will continue to collect donations for the next few weeks as demand for their help increases at this time of year.

If you are able to donate anything they would be very grateful - they are particularly in need of the items below.
Please bring any donations to the school office
Thank you in advance for your support.



Current Needs

Rice	Tinned fish	Shampoo
Pasta	Cereal	Soap
Tinned Meats	Squash	Shower gel
Tinned Fruits	Juice	Razors
Soup	Tinned Puddings	Nappies
Tea bags	Snacks	Baby Wipes
Sugar	Jam	Washing up liquid
Peanut Butter	Chocolate Spread	Tooth brushes
Sauces	Coffee	Tooth paste
Tinned fish	Long life milk	Sanitary products
Tinned tomatoes		Toilet Rolls
Tinned vegetables		Deodorant

Registered Charity 1204958

MATHS £10 CHALLENGE

Back by popular demand, the school are taking part in the £10 maths challenge set by Miss Newley. Each class will have £10 to spend on making, selling, running an event with the aim to making as much profit as possible. .

Each class can keep the profits that they make and buy their choice of maths resources/games. The winning class will get to keep their profit AND the £10 start up money from each class = £70. Below is a list of the class activities - who will win this year?!
all events open to all years challenge ends Thursday 5th December

EYFS

**MAKING AND SELLING CHRISTMAS STOCKING FILLERS
FROM £1 - AVAILABLE FROM NEXT WEEK**

YEAR 1

**CUSTARD PIE THE TEACHER
MONDAY 25TH NOVEMBER 12-1PM
WET SPONGE £1
CUSTARD PIE £1.50**

YEAR 2

**BINGO FOR THE FAMILY
MONDAY 25TH NOVEMBER 2024 4-5PM
TICKETS AVAILABLE IN OFFICE £2.50 ADULT £1.50 CHILD (OVER 5)**

YEAR 3

**COLOURING COMPETITION
£1 SHEET - COLOURING SESSIONS IN YR 3
THURSDAY 28TH AND FRIDAY 29TH
PRIZE FOR KS1 & KS2**

YEAR 4

**HOT CHOCOLATE SERVED AT PLAYTIME AND LUNCHTIME
FROM MONDAY 25TH NOVEMBER - COST 50P**

YEAR 5

**BEADED FRIENDSHIP BRACELETS
AVAILABLE IN THE LIBRARY FROM MONDAY 25TH NOVEMBER
PRE-MADE £1
CUSTOM-MADE £2**

YEAR 6

TBC

EYFS 2025

If you, or anyone you know, has a child that is due to start school next September 2025 please read the below.

If your child was born between 1 September 2020 and 31 August 2021, you can now apply for primary (reception) school places. The application window is open between 4 November 2024 and 15 January 2025.

Those received after the 15 January deadline will be considered once all on time applications are determined. This means applying late could reduce the chance of getting a place at your preferred school.

Christmas is coming!

PRESENTS UNDER THE TREE DONATIONS

Once again, this year we are looking for donations for 'Presents Under The Tree' These small presents are for the children to buy for someone they love at Christmas for either 50p or £1.

Examples for this are items like chocolates, socks, hand cream, keyrings, small ornaments etc. We will need approx. 170 gifts and appreciate how generous you have been in the past. We will help the children wrap their present and then they can bring them home and put them under the tree.

We are also looking for unwanted wrapping paper for this. Please have a look and see if you have any unwanted gifts that you would like to re-gift. Thank you in advance for your support.

RAFFLE / TOMBOLA

We are looking for donations for both the raffle and the tombola at the Christmas Fayre. If you have any unwanted alcohol or chocolates etc we would love it for the tombola. If you have any bigger items that we could use for the raffle or if you have a business or work somewhere that could donate a voucher that would be amazing. We were thrilled with the money we made from our Christmas events last year and hope, with your help, to raise a big amount again!

Please help us by downloading the Asda Rewards APP

Parentkind have teamed up with Asda, to help raise funds for schools and we need you to help! All you have to do is, opt in through the Asda Rewards app, choose Cherry Tree Academy and shop and scan in store or shop online at

Asda.com, between 2nd September and 30th November 2024

Asda will donate 0.5% of the value of your shop to our Primary school. Also, every time somebody opts in, Asda will give an additional £1 to the school Cashpot. Plus, it doesn't stop there – Asda are also giving £50 to every school to get them started.

All money raised will be donated to schools to spend on the things that we need the most.

Diary Dates Autumn 2024

November

26th November – Year 3 Class Assembly. Parents/carers invited 2.30pm

December

11th December - EYFS and Year 1 Nativity (Morning) 9.30am

11th December – Year 2 and 3 Christmas Performance (Afternoon)

12th – Year 4, 5 and 6 Christmas Performance (Morning) 9.30am

17th Christmas Jumper day

17th Christmas Lunch

18th December – Christmas Fayre

20th December – Class Christmas parties (afternoon)

HALF TERM – 23rd December – 3rd January 2023

6th January – INSET DAY/Non pupil day

7th January – Pupils back to school. First day of Spring Term